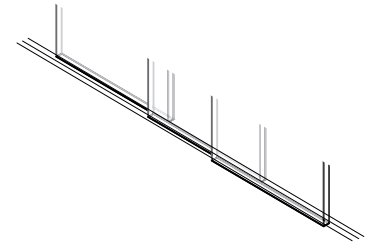


# V32 RANGE INVISIBLE FRAME SINGLE TRACK

## PRODUCT INFORMATION

The Vitrocsa V32 range has thermal reinforcement and a fibreglass profile. This range is designed for standard fixed or sliding openings



### RAILS + FRAMES

- Embedded and concealed in the floor, wall and ceiling
- Thinner frames, just 124 mm wide for a birail (mono: 56 mm + 12 mm seal)
- Saline treatment specially adapted for coastal projects.

### OPTIONS

- Open angle
- Pocket
- Motorisation
- Mosquito net

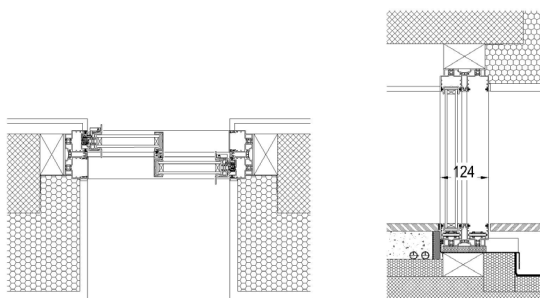
### VERTICAL CONNECTION

- 23 mm
- Reinforced for very windy locations or installation at high altitudes
- Optimised heat retention with fibreglass towers

### GLAZING

- 32 mm
- Panels up to 12 m<sup>2</sup>

### MAIN CROSS SECTIONS



### CLOSURE MECHANISM

- 2-point closure button
- Cylinder
- Range of options for electric closure
- Alarms

VITROCSA Headquarters  
Orchidées Constructions SA  
Rue de la Gare 8  
2024 Saint-Aubin-Sauges  
Switzerland

T +41 24 436 22 02  
F +41 24 436 22 02  
[www.vitrocsa.com](http://www.vitrocsa.com)  
[info@vitrocsa.com](mailto:info@vitrocsa.com)

V I T R O C S A

THE MINIMALIST WINDOW