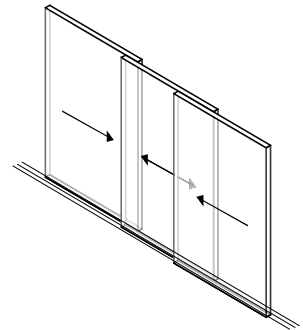


V56 RANGE SLIDING

PRODUCT INFORMATION

The Vitrocsa V56 range offers infinite glazing surfaces using 56-mm-thick double or triple glazing. This range represents an evolution of our current sliding windows.

The Vitrocsa V56 window has been developed, keeping the same mechanical characteristics of the Vitrocsa systems which have proven their worth for nearly 30 years.



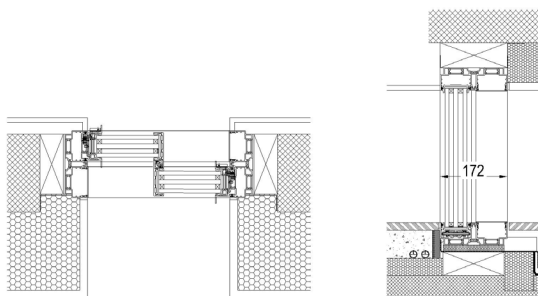
RAILS + FRAMES

- Embedded and concealed in the floor, wall and ceiling
- Frame just 172 mm wide for a birail (mono: 80 mm + 12 mm seal)
- Saline treatment specially adapted for coastal projects

VERTICAL CONNECTION

- 22 mm
- Reinforced for very windy locations or installation at high altitudes
- Optimised heat retention with fibreglass towers

MAIN CROSS SECTIONS



CLOSURE MECHANISM

- 2-point closure button
- Electric closure
- Alarms

GLAZING

- 56 mm in double or triple glazing

OPTIONS

- Standard sliding
- Pocket
- Open angle
- Invisible frame with 2 grooves
- Motorisation
- Inner/outer incline

VITROCSA Headquarters
Orchidées Constructions SA
Rue de la Gare 8
2024 Saint-Aubin-Sauges
Switzerland

T +41 24 436 22 02
F +41 24 436 22 02
www.vitrocsa.com
info@vitrocsa.com

V I T R O C S A

THE MINIMALIST WINDOW



V56 RANGE SLIDING

PERFORMANCE

To clearly demonstrate the properties of the VITROCSA V56 SLIDING window, we have conducted standardised tests in an accredited laboratory (SWISS TESTING SERVICE NUMBER STS 317).

The results of these investigative tests are shown in the table below:

V56 fixed-sliding	Standards (test and classification)	Classification
Air permeability	EN 1026 (test) EN 12207 (classification)	Class 4
Water permeability	EN 1027 (test) EN 12208 (classification)	Class 9A
Wind resistance	EN 12211 (test) EN 12210 (classification)	Class B5
Repeated opening/closing	EN 1191 (test) EN 12400 (classification)	Class 3 (20,000 cycles)
Resistance to a vertical load	EN 14608 (test) EN 13115 (classification)	Class 3 (600 N)