

# TH+ range Pivoting

## PRODUCT INFORMATION

With its 32-mm or 44-mm-thick double or triple glazing, the Vitrocsa TH+ range is suitable for pivoting glazed surfaces of up to 600 kg and 12 m<sup>2</sup> per pane depending on the wind resistance.

The pivoting surface may be integrated as a main entrance door for a villa or as an access door for a patio with a visible frame of just 50 mm.

The sophisticated closing system is ingeniously integrated in the lower section, enabling the door to be locked and providing a perfect seal. This system resembles a watch mechanism, and is completely hidden inside the frame.

The pivot axis may be central or offset (at least 270 mm) to create a larger opening, and a pivoting surface may be next to a sliding or fixed door.

### RAILS + FRAMES

- Embedded and concealed in the floor, wall and ceiling
- Frame just 140 mm wide for a birail (mono: 64 mm + 12 mm seal)
- Saline treatment specially adapted for coastal projects

### GLAZING

- 32 mm or 44 mm
- Panels 600 kg and 12 m<sup>2</sup>

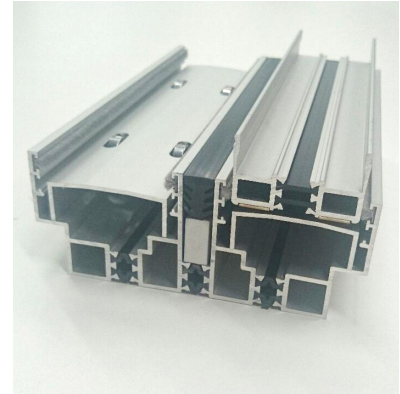
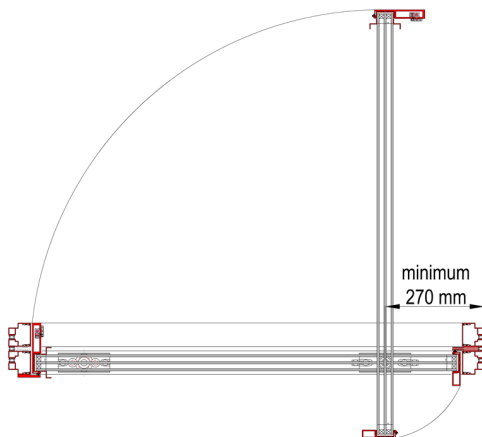
### VERTICAL CONNECTION

- 22 mm
- Reinforced for very windy locations or installation at high altitudes

### CLOSURE MECHANISM

- 2-point closure button (092)
- Rack
- Cylinder
- RCI electric closure
- Alarms

## MAIN CROSS SECTIONS



## OPTIONS

- Pivoting (up to 600 kg and 12 m<sup>2</sup>)

VITROCSA

VITROCSA HEADQUARTERS  
Orchidées Constructions SA  
Rue de la Gare 8  
2024 Saint-Aubin-Sauges  
Switzerland

T +41 24 436 22 02  
info@vitrocsa.com  
www.vitrocsa.com

## PERFORMANCE

To clearly demonstrate the properties of the VITROCSA TH+ PIVOTING window, we have conducted standardised tests in an accredited laboratory (SWISS TESTING SERVICE NUMBER STS 317).

The results of these investigative tests are shown in the table below:

TH+ pivoting	Standards (test and classification)	Classification
Air permeability	EN 1026 (test) EN 12207 (classification)	Class 3
Water permeability	EN 1027 (test) EN 12208 (classification)	Class 8A
Wind resistance	EN 12211 (test) EN 12210 (classification)	Class C3/B4