

# V56 range Guillotine

## PRODUCT INFORMATION

The Vitrocsa V56 range offers infinite glazing surfaces using 56-mm-thick double or triple glazing. The Vitrocsa V56 range represents an evolution of our current sliding windows.

The Vitrocsa V56 window has been developed, keeping the same mechanical characteristics of the Vitrocsa systems which have proven their worth for nearly 30 years.

### RAILS + FRAMES

- Embedded and concealed in the floor, wall and ceiling
- Saline treatment specially adapted for coastal projects

### GLAZING

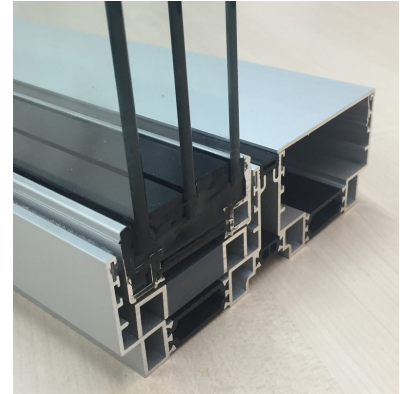
- 56 mm in double or triple glazing

### VERTICAL CONNECTION

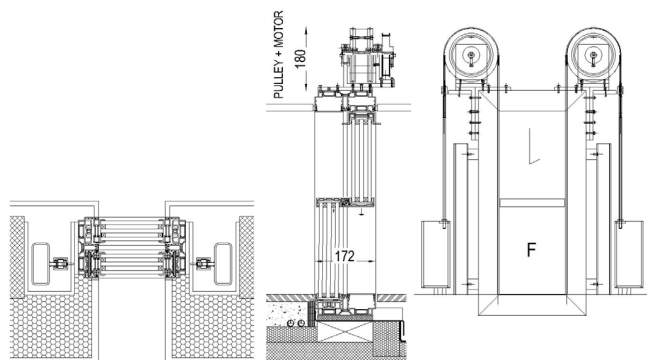
- 25 mm
- Reinforced for very windy locations or installation at high altitudes

### CLOSURE MECHANISM

- 1-point closure button
- Electric closure



## MAIN CROSS SECTIONS



## OPTIONS

- Up to 1000 kg per pane

VITROCSA

VITROCSA HEADQUARTERS  
Orchidées Constructions SA  
Rue de la Gare 8  
2024 Saint-Aubin-Sauges  
Switzerland

T +41 24 436 22 02  
info@vitrocsa.com  
www.vitrocsa.com

# CONFIGURATION DIAGRAMS

G3 : One counterweight on each side  
(manual or motorised)

