

TH+ range Guillotine

PRODUCT INFORMATION

Using 32- or 44-mm-thick double or triple glazing, the Vitrocsa TH+ range is for sliding window surfaces up to 500 kg per pane, depending on the glass supplier.

The excellent insulating properties of the profiles, in combination with the glass, enable current low energy consumption standards to be met.

RAILS + FRAMES

- Embedded and concealed in the floor, wall and ceiling
- Frame just 140 mm wide for a birail (mono: 64 mm + 12 mm seal)
- Saline treatment specially adapted for coastal projects

VERTICAL CONNECTION

- 22 mm
- Reinforced for very windy locations or installation at high altitudes

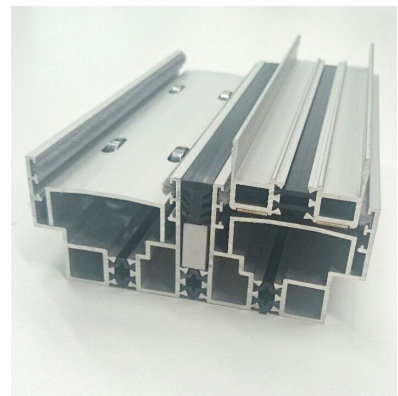
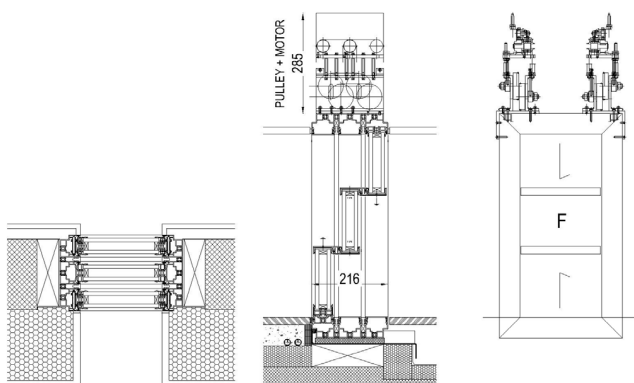
GLAZING

- 32 mm or 44 mm
- 500 kg per pane

CLOSURE MECHANISM

- 1-point closure button (029, 035, 055)
- Cylinder
- Range of options for electric closure
- Alarms

MAIN CROSS SECTIONS G2



OPTIONS

There are two types of guillotine:

- 1) A system with two glass panes which counter-balance one another
- 2) A counterweight system on one side or both sides of the frame

These can be manual or motorised, provided that the weight is always counterbalanced.

Top part mechanism:

- Type 1) Manual: 158 mm
Motorised: 280 mm
Type 2) Manual: 180 mm
Motorised: 180 mm

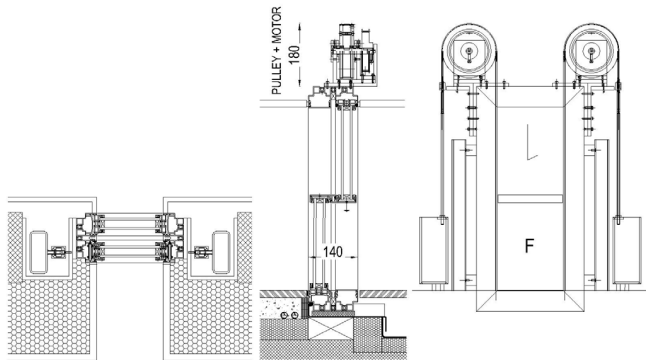
See configuration diagrams page.

VITROCSA

VITROCSA HEADQUARTERS
Orchidées Constructions SA
Rue de la Gare 8
2024 Saint-Aubin-Sauges
Switzerland

T +41 24 436 22 02
info@vitrocsa.com
www.vitrocsa.com

MAIN CROSS SECTIONS G3

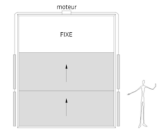


CONFIGURATION DIAGRAMS

TH+ G1: two counterbalanced panes; birail-trirail; manual



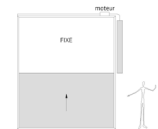
TH+ G4: NON independent counterweight on each side (1 motor, 2 sliding panes) (manual or motorised)



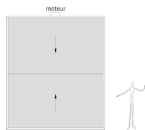
TH+ G1HW: two counterbalanced panes; birail-trirail; heavy (<300 kg)



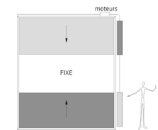
TH+ G5: one counterweight on one side (1 sliding pane) (manual or motorised)



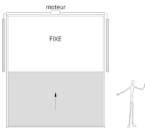
TH+ G2: two counterbalanced panes; birail-trirail; motorised



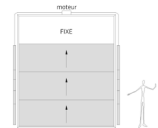
TH+ G5A: two independent counterweights on one side (same as G5 but with 2 motors/2 sliding panes)



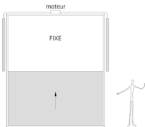
TH+ G3: one counterweight on each side (manual or motorised)



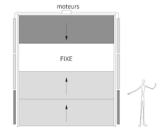
TH+ G6: 3 panes, 1 driven and 2 floating, 1 motor



TH+ G3A: one counterweight on each side but inverted compared to the G3 (manual or motorised)



TH+ G6A: 3 panes, 2 driven and 1 floating, 2 motors



PERFORMANCE

To clearly demonstrate the properties of the VITROCSA GUILLOTINE TH+ window, we have conducted standardised tests in an accredited laboratory (SWISS TESTING SERVICE NUMBER STS 317).

The results of these investigative tests are shown in the table below:

TH+ guillotine	Standards (test and classification)	Classification
Air permeability	EN 1026 (test) EN 12207 (classification)	Class 3
Water permeability	EN 1027 (test) EN 12208 (classification)	Class 9A
Wind resistance	EN 12211 (test) EN 12210 (classification)	Class C2/B3/4A