

3001 range Sliding

PRODUCT INFORMATION

The Vitrocsa 3001 range offers sliding window surfaces of up to 6 m² with 26-mm-thick double glazing. The first Vitrocsa 3001 window was developed at the start of the 1990s. With the experience we now have, we can guarantee that this system presents no hidden defects.

The roller mechanism and sealing system work perfectly, provided that the window has been assembled in line with good industry practices.

RAILS + FRAMES

- Embedded and concealed in the floor, wall and ceiling
- Frame just 99.5 mm wide for a birail (mono: 45 mm + 9.5 mm seal)
- Saline treatment specially adapted for coastal projects

GLAZING

- 26 mm
- Panels up to 6 m²

VERTICAL CONNECTION

- 18.5 mm
- Reinforced for very windy locations or installation at high altitudes

CLOSURE MECHANISM

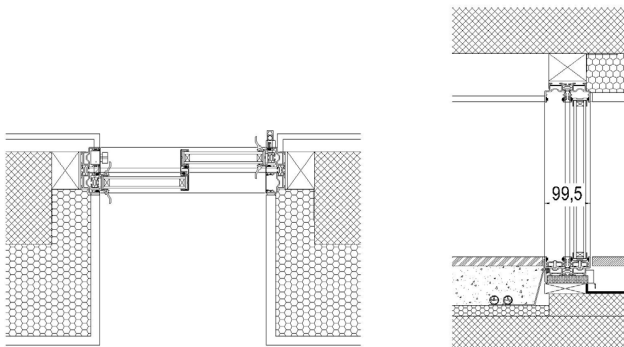
- 1-point closure button (029, 035, 055)
- Cylinder
- Alarms



OPTIONS

- Standard sliding (up to 6 m²)
- Fixed (up to 9 m²)
- Open angle
- Pocket

MAIN CROSS SECTIONS



VITROCSA

VITROCSA HEADQUARTERS
Orchidées Constructions SA
Rue de la Gare 8
2024 Saint-Aubin-Sauges
Switzerland

T +41 24 436 22 02
info@vitrocsa.com
www.vitrocsa.com

PERFORMANCE

To clearly demonstrate the properties of the VITROCSA 3001 SLIDING window, we have conducted standardised tests in an accredited laboratory (SWISS TESTING SERVICE NUMBER STS 317).

The results of these investigative tests are shown in the table below:

3001 fixed-sliding	Standards (test and classification)	Classification
Air permeability	EN 1026 (test) EN 12207 (classification)	Class 4
Water permeability	EN 1027 (test) EN 12208 (classification)	Class 7A
Repeated opening/closing	EN 1191 (test) EN 12400 (classification)	Class 3 (20,000 cycles)
Resistance to a vertical load	EN 14608 (test) EN 13115 (classification)	Class 3 (600 N)
Resistance to break-ins	EN 1628 to 1630 (test) EN 1630 (classification)	WK2/RC2 (resistance class 2)